

WELCOME

DYNAMIC INDUSTRIES PRESENTATION

ADDRESS

Dynamic Industries

Gat No. 228, Plot No. E1, Cameron Industrial Park II,
Ambethan, Chakan, PIN-410501.

Manufacture of Sheet Metal Pressed Components & Welded assemblies.

SCOPE FOR CERTIFICATION

IATF 16949:2016 -- Manufacture of Sheet Metal Pressed Components & Welded Assemblies.

Contacts

Ph. No. :+91-9850047295/+91-8380083839

Email : info@thedynamicindustries.com/badami@thedynamicindustries.com

INTRODUCTION

DYNAMIC INDUSTRIES was established in 1996 at Chikhali, Kudalwadi. The organization has flourished since then with in the field of manufacture of pressed components & welded assemblies as per customer requirements. The Chakan unit was established in April 2015 as expansion.

Highly experienced and professional staff manages all the operations. The company is well equipped with all the facilities and with customer focused attitudes.

QMS CERTIFICATE (IATF 16949:2016)



CERTIFICATE



This is to certify that

DYNAMIC INDUSTRIES
 Gat No.: 228, Plot No E-1
 Ambethan Chakan, Tal - Khed
 Dist-Pune - 410 501
 Maharashtra
 INDIA
 IATF USE P326PY

has implemented and maintains a **Quality Management System**.

Scope:
 Manufacture of Sheet Metal Pressed Components & Welded Assemblies.

An audit, conducted and documented in a report, has verified that this quality management system fulfills the requirements of the following International Automotive Standard:

IATF 16949:2016
 (without product design)

Certificate registration no. 50252403 IATF16

Issuing date 2021-08-12

This certificate is valid until 2024-08-11

Date of revision 2023-08-23

IATF No. 0417970



For and on behalf of DQS



Nuran S. Venkateshram
 Director-Corporate Automotive Program, DQS Holding GmbH




Michael Oreschall
 Managing Director, DQS Holding GmbH



IATF Contact Office: DQS Holding GmbH, Konrad-Adenauer-Allee 9-10, 61118 Bad Vilbel, Germany
 The validity of this certificate can only be verified by the QR code.

1 / 2 2023-08-23



Annex to certificate registration no.: 50252403 IATF16
IATF-No.: 0417970

DYNAMIC INDUSTRIES
 Gat No.: 228, Plot No E-1
 Ambethan Chakan, Tal - Khed
 Dist-Pune - 410 501
 Maharashtra
 INDIA



Remote Location

50258712
 DYNAMIC INDUSTRIES
 Gat No. 228, Plot No. - C - 6/1
 Ambethan, Chakan
 Pune - 410 501
 Maharashtra
 INDIA

Scope

Warehousing.

This annex (edition: 2023-08-23) is only valid in connection with the above-mentioned certificate.

2 / 2 2023-08-23

COMPANY VISION & MISSION

VISION

To become a Complete Solution Provider for sheet metal assemblies by giving world class quality, competitive cost, reliable products and excellent services.

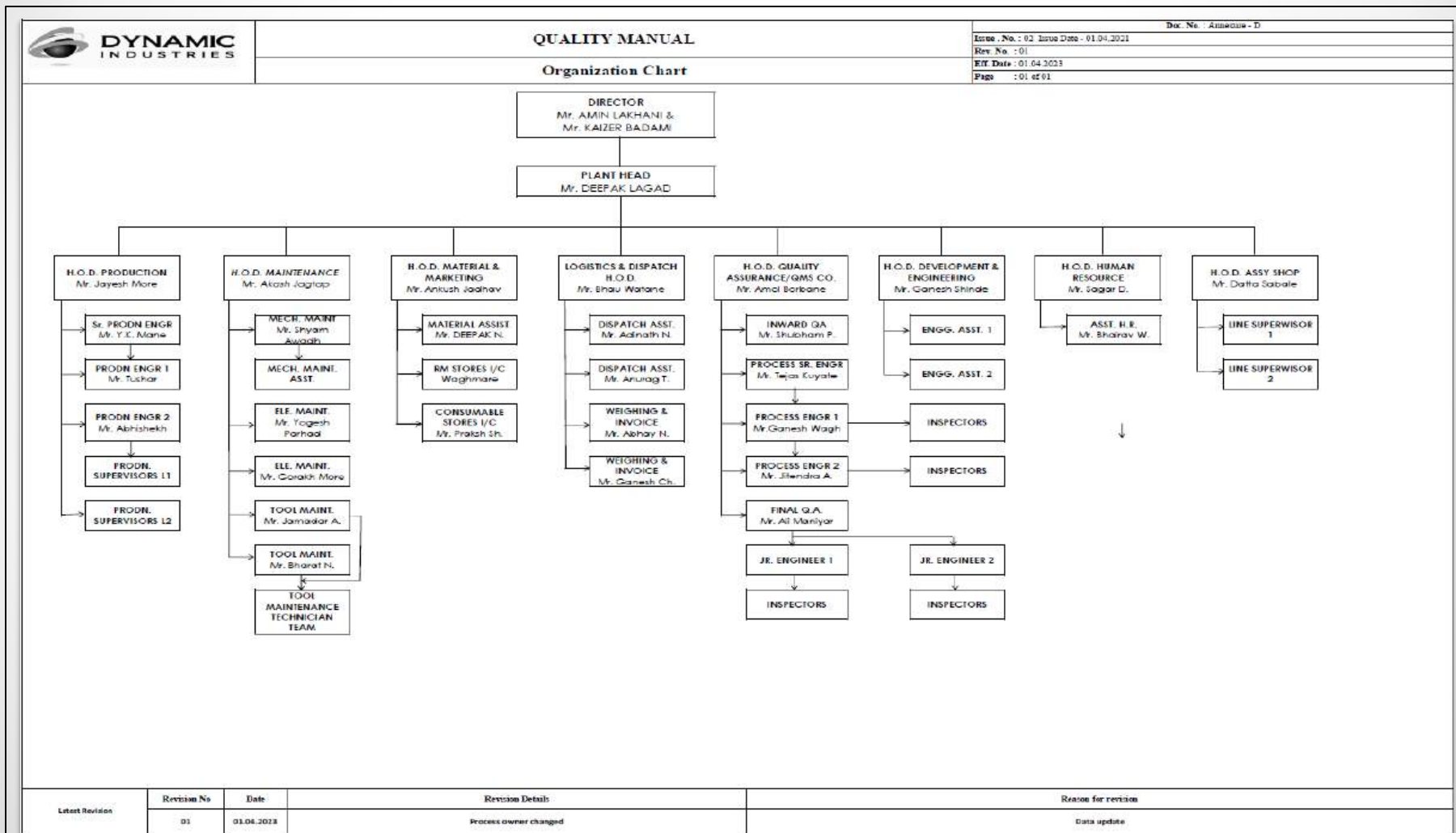
MISSION

To produce quality sheet metal products for automobiles/engineering applications.
To continually improve our processes and services.
To build upon the strength of each team member.

OUR BUSINESS POLICY

We are committed to manufacture premium quality and competitively priced sheet metal and Welded components that suffice to varying industrial requirements. With continual improvement in our business processes, quality management system, employee skills and building a team spirit in our workers, we aim at achieving maximum satisfaction of our customers.

ORGANIZATION CHART



DYNAMIC INDUSTRIES

OVERVIEW – PLANT & FACILITIES



MILESTONES

- **1996 – Established in the name of Dynamic Industries of fabrication set up.**
- 1998 – Entered a Small Size Presses up to 100Ton.
- 2000 – Achieved ISO:9002:1994 Certification by DNV.
- **2003 – Entered in Medium Size Press up to 300 Ton.**
- 2008 – Fabrication set up developed 10000 Sq. ft. area.
- **2009 – Second unit started for press line at PCNDTA, Bhosari.**
- **2009 – Achieved ISO/TS: 16949:2009 & ISO:9001:2008 Certification from TUV.**
- **2010 – New 500 Ton & 250 Ton press set up added for additional capacity at PCNDTA, Bhosari.**
- 2011 – New firm in the name of Dynamic Trans-System Pvt. Ltd. for Precision Parts Manufacturing.

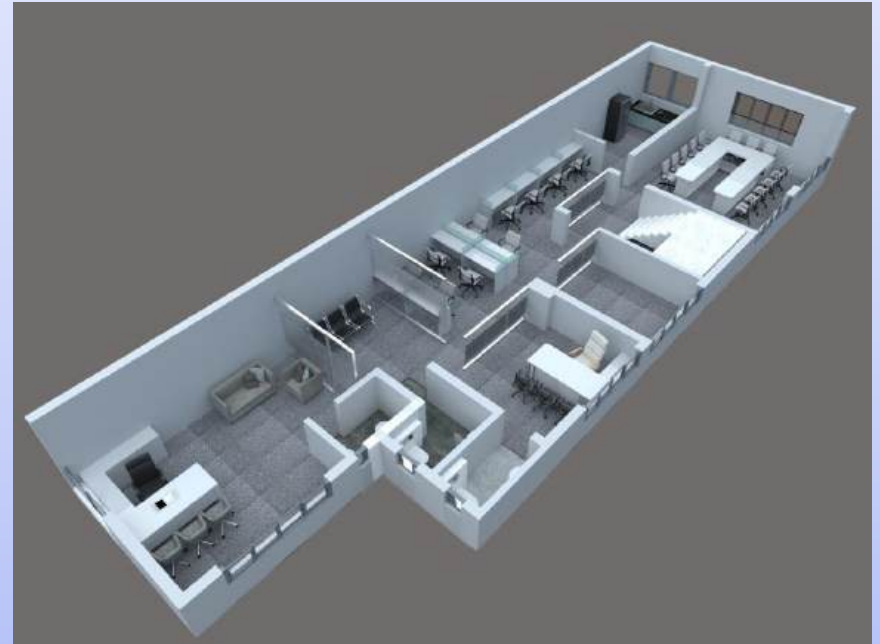
MILESTONES

- **2015 – New plant at Chakan got operational with higher tonnage machine of 800 T & 22000 Sq. Ft. area. Facility of presses 800T 1 Nos., 500T 5 Nos., 300T 2 Nos. & 250T 1 Nos.**
- **2018 – Taken IATF – 16949 certification from DQS India.**
- **2018 – New facility expansion by 12000 Sq. Ft. shed area for fabrication & dispatch.**
- **2021 – New facility expansion by 8500 Sq. Ft. covered area with overhead EOT crane facility for tool storage as well as upcoming business.**
- **2022 – Addition of 4 Nos. 500 Ton press in HPS line.**
- **2023 – New facility expansion by 14000 Sq. Ft. covered area with overhead EOT crane facility for HPS line of 1000T 2 Nos., 800T 1 Nos. Shed work is finished with installation of 800T-1 Nos. in Oct-2023.**

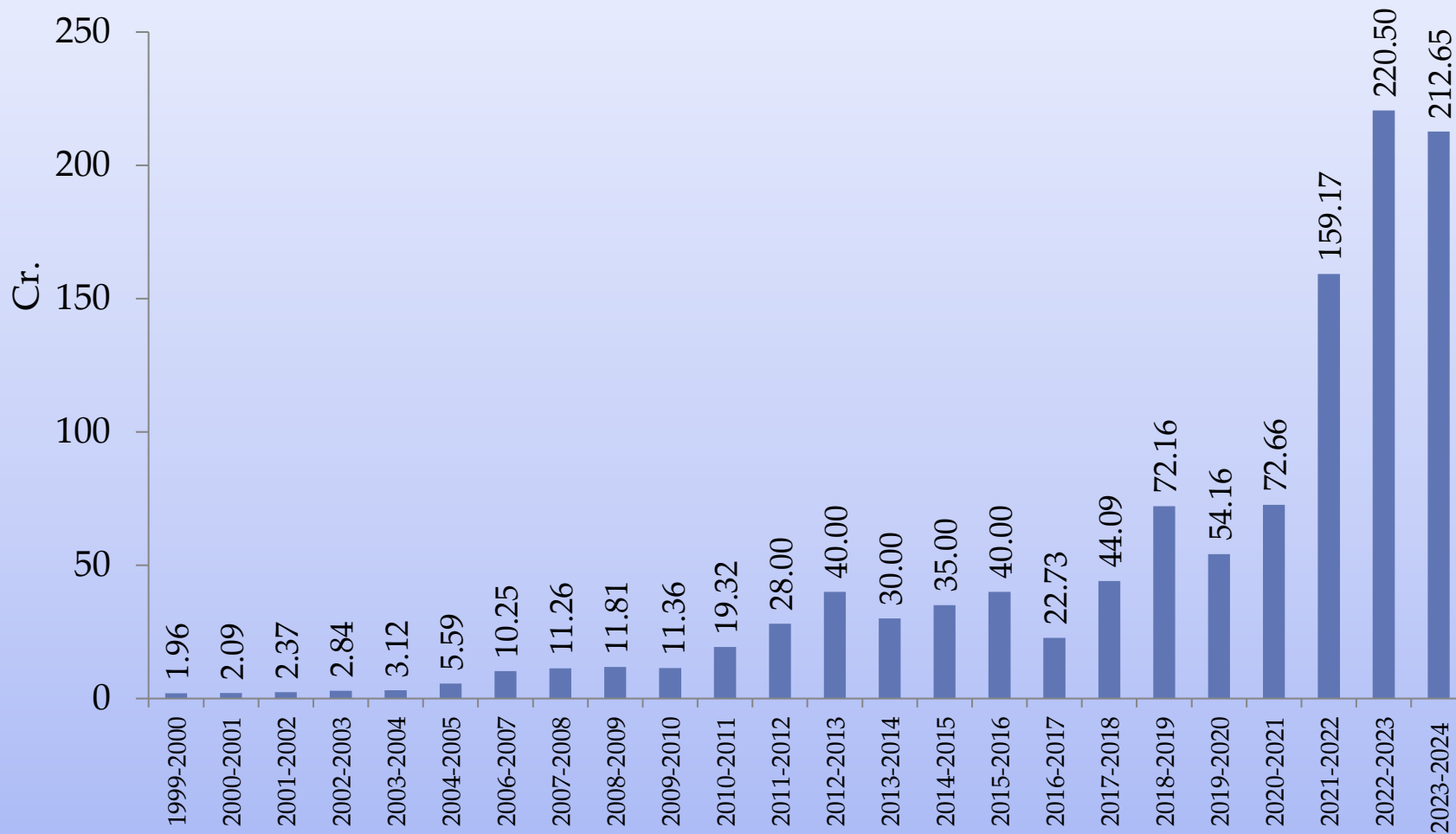
DYNAMIC INDUSTRIES

MILESTONES

- 2023 – Added facilities of office, staff & worker canteen in 2700+1200+1500 Sq. Ft. area.



YOY SALES GROWTH



OUR VALUABLE CUSTOMERS

- JBM MA, CHAKAN
- TM AUTOMOTIVE SEATING SYSTEM, CHINCHWAD
- RELIABLE AUTOTECH, CHAKAN
- RELIABLE AUTOTECH, NASHIK
- AUTOMOTIVE STAMPING & ASSEMBLIES LTD.
- MUNGI AUTO, Pvt. Ltd. , CHAKAN
- AUTOCOMP CORPORATION PANSE, CHAKAN
- SKH M INDIA PRIVATE LIMITED. PUNE
- CIE AUTOMOTIVE INDIA LTD. NASHIK & KANHE DIVISION
- MAHINDRA AUTO STEEL CHAKAN

OUR RAW MATERIAL SUPPLIER

- MAHINDRA AUTO STEEL PVT. LTD., CHAKAN
- MAHINDRA ACCELO LTD., KANHE
- JSW MI STEEL SERVICE CENTER PVT. LTD., KHED
- POSCO MAHARASHTRA STEEL, MANGON
- POSCO INDIA PUNE PROCESSING PVT. LTD.
- TATA STEEL DOWNSTREAM PRODUCTS LTD.
- ARCELOR MITTAL NIPPON STEEL INDIA PVT. LTD.
- SSAB SWEDISH STEEL INDIA PVT. LTD.
- POSHS METAL INDUSTRIES PVT. LTD.

PRESS MACHINE SPECIFICATIONS

Press Capacity	Nos. of Press	Shut Height (mm)		Machine Stroke (mm)	Bed Size (mm)	Cushion Capacity	Make	Remark
		Min	Max					
800 Ton	01	700	1100	450	1600 x 3000	80 Ton	KAUSHICO	INSTALLED
500 Ton	03	550	900	400	1600 x 2500	50 Ton	KAUSHICO	INSTALLED
500 Ton	01	820	1100	400	1400 x 2700	50 Ton	BRITISH CLEARING	INSTALLED
500 Ton	01	800	900	350	1400 x 2800	50 Ton	ISGEC	INSTALLED
500 Ton	04	580	750	300	1600 x 1400	30 Ton	KAUSHICO	INSTALLED
300 Ton	02	650	750	250	800 x 1200	25 Ton	KAUSHICO	INSTALLED
250 Ton	01	630	730	160	700 x 1100	25 Ton	KAUSHICO	INSTALLED
150 Ton	01	320	400	160	600 x 750	-	ISGEC	INSTALLED
100 Ton	01	230	300	100	500 x 600	-	ISGEC	INSTALLED
800 Ton	01	700	1100	450	1600 x 3000	80 Ton	KAUSHICO	INSTALLED
800 Ton	01	-	-	-	-	-	KAUSHICO	DEC-24
1000 Ton	02	-	-	-	-	-	KAUSHICO	DEC-24

WELDING FACILITIES AND M/C DETAILS

Sr. No.	TYPE OF MACHINE	QUANTITY	MAKE	SPECIFICATION
1)	CO2	11 Nos.	Mogra	400Amp.
2)	Projection Welding	2 Nos.	Kirti	75 Kva.

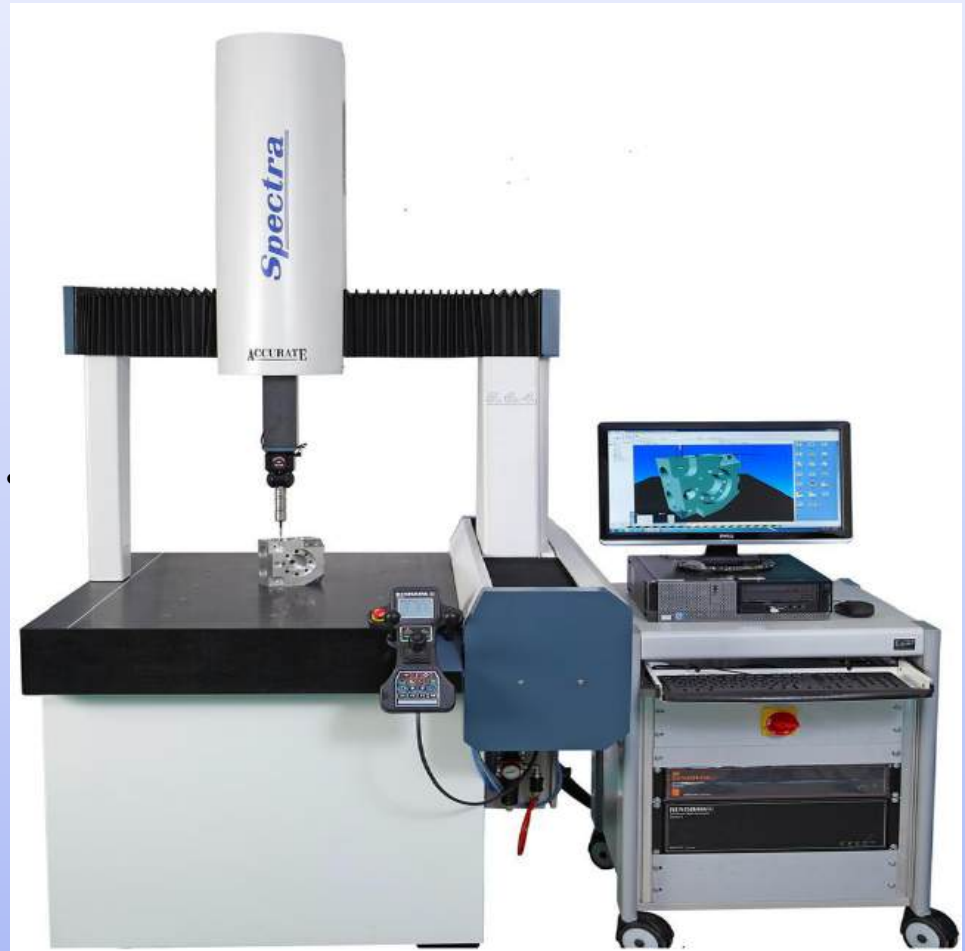


INSPECTION AND TESTING FACILITIES

SR. NO.	TYPE OF TESTING/ INSPECTION	FACILITIES	SPECIFICATION
1)	CMM (Make- Accurate)	INHOUSE	Measuring range : X-800, Y-1000, Z-600 (mm.)
2)	Trimos (Make- Trimos)	INHOUSE	0-600mm.
3)	DIGITAL ROCKWELL SUPERFICIAL HARDNESS TESTING MACHIN	INHOUSE	LOAD 15,30,45 FOR ROCKWELL SUPERFICIAL SCALE 60,100,150KG
4)	RAW MATERIAL TESTING	GSD LAB	-
5)	WELD PENETRATION TEST	GSD LAB	-

INSPECTION AND TESTING FACILITIES

CMM
Make- Accurate
Measuring range :
X-800, Y-1000, Z-
600 (mm.)



MATERIAL HANDLING DEVICES

MATERIAL HANDLING DEVICES

Sr. No	SPECIFICATION	CAPACITY	TYPE OF MACHINE	QUANTITY	REMARK
1	OVER HEAD CRANE (Press shop)	10 MT	-	1 Nos.	INSTALLED
2	OVER HEAD CRANE (Tool room)	6.8 MT	-	1 Nos.	INSTALLED
3	OVER HEAD CRANE (Press shop)	10/20 MT	-	1 Nos.	INSTALLED
4	OVER HEAD CRANE (Tool storage shop)	10 MT	-	1 Nos.	INSTALLED
5	OVER HEAD CRANE (Raw Material)	5 MT	-	2 Nos.	INSTALLED
6	OVER HEAD CRANE (Dispatch)	10 MT	-	1 Nos.	INSTALLED
7	FORK LIFT	4 MT	-	4 Nos.	-
8	OVER HEAD CRANE (New HPS line)	10 T	-	1 Nos.	INSTALLED

AVAILABLE STROKE CAPACITY DETAILS

MACHINE WISE BALANCE STROKE CAPACITY IN NOS

Sr. No	SPECIFICATION	BAL CAPACITY IN NOS	TYPE OF MACHINE	PRESS QUANTITY	REMARK
1	800 T	60 K	PNEMATIC PRESS	2 Nos.	INSTALLED
2	500 T	450 K	PNEMATIC PRESS	9 Nos.	INSTALLED
3	350 T	60 K	PNEMATIC PRESS	1 Nos.	INSTALLED
4	250 T	120 K	PNEMATIC PRESS	2 Nos.	INSTALLED

THANK YOU...!!

